



Echoscan
US-4000/500



THE ART OF EYE CARE

Three in One

The US-4000 comprehensive ultrasound device includes B-scan, biometry and pachymetry*. Combining all three functions in one compact and innovative device brings a new image to your practice.

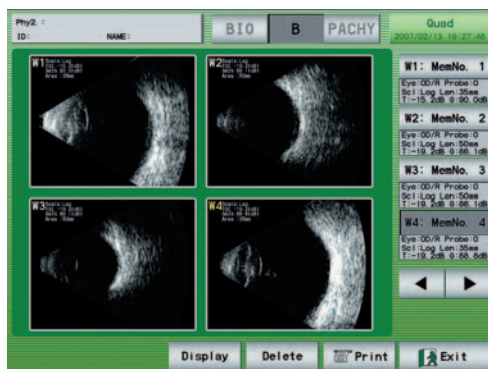
*The US-500 includes biometry and pachymetry only.

- COMPACT
- ONLY A LIGHTWEIGHT 8.5 KG
- TOUCH PANEL DISPLAY
- NO PC REQUIRED
- TILTABLE COLOR LCD

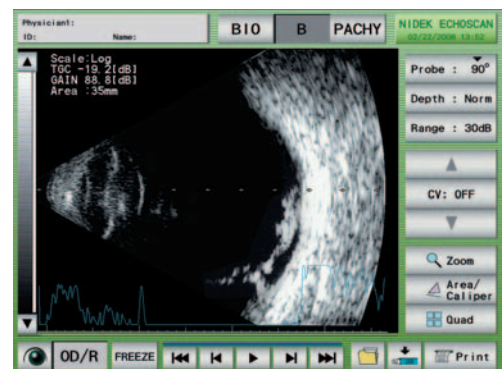
■ B-scan*

A Crisp and Clear Image

The results are high quality images, which are essential for accurate analysis. The key to achieving high quality images is through scanning 400 lines over 60° which is displayed on a 1,024 x 768 XGA monitor. High contrast of resonated signals and the high quality LCD monitor provide the ideal images for the most accurate diagnosis.



Multi image display function



Cross vector mode

Internal Printer

B-scan image is easily printed with the internal thermal printer and may be attached to the patient's medical record sheet.

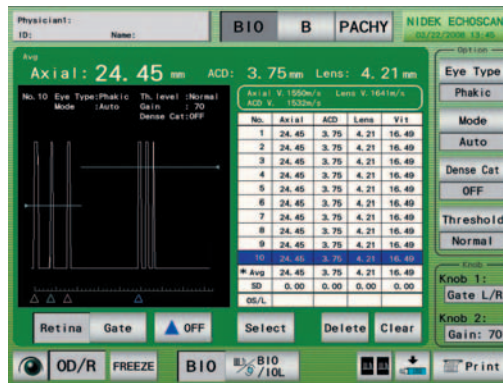


*Available for the US-4000

■ Biometry

Rapid, Accurate and Easy to Use

Using the following algorithms, axial length measurements and IOL power calculations are performed twice as fast as the conventional model. Measurement accuracy for dense cataracts and existing opacities is accomplished by pressing the "Dense Cat" switch and "Gate" switch.



Biometry image



Customized IOL calculation

■ Pachymetry

The pachymetry mode offers precise measurement of the corneal thickness within a $\pm 5 \mu\text{m}$ error. (A model without pachymetry is also available.)



45° Fixed probe*



Straight probe

*Provided as standard accessories depending on the configuration.

■ Easy Data Transfer

Data is easily stored in USB memory or by LAN. Utilizing the special interface cable, keratometry values measured by any NIDEK ARK are automatically imported into the US-4000/500 for easy IOL power calculation.

US-4000/500 Specifications

Model	US-4000	US-500
B-scan		
Probe	10 MHz	Not available
Scan angle	60°	
Scan depth	Normal (35 mm / 1,550 m/s), Long (50 mm / 1,550 m/s)	
Sector line density	400 lines	
Zoom	x2.5, x5.0	
Scale	Color, Gray scale 256 levels	
Gain / TGC	0 to 90 dB / 0 to -20 dB	
Gain curves	Log, linear, S-curve	
Biometry		
Probe	10 MHz solid probe	←
Internal fixation	LED (red)	
Measurement value	Axial length, Anterior chamber depth, Lens thickness, Vitreous body length	
Accuracy	±0.1 mm	
Range	12 to 40 mm	
Minimum display unit	0.01 mm	
Built-in IOL formula	Binkhorst, Holladay, SRK, SRK II, SRK/T, Hoffer Q	
Pachymetry*1		
Probe	10 MHz solid probe	←
Accuracy	±5 µm	
Range	200 to 1,300 µm	
Minimum display unit	1 µm	
Measured point	Up to 25 points can be memorized.	
IOP correction	Available	←
Display	8.4-inch color LCD (XGA: 1,024 x 768)	←
Printer	Thermal line printer with automatic paper cutter	←
Interface	USB (1.1), LAN, RS-232C, Video output (NTSC)	USB (1.1), LAN, RS-232C
Power supply	100 to 120 V AC / 230 V AC, 50/60 Hz	←
Power consumption	70 VA	←
Dimensions/mass	300 (W) x 285 (D) x 330 (H) mm / 8.5 kg 11.8 (W) x 11.2 (D) x 13.0 (H)" / 19 lbs.	←
Standard accessories	Stylus, B-scan probe, A-scan probe, Foot switch, Test piece (for biometry measurement), Printer paper, Power cord, Ultrasonic gel, Dust cover, Spare fuse, Probe rest	Stylus, A-scan probe, Foot switch, Test piece (for biometry measurement), Printer paper, Power cord, Dust cover, Spare fuse, Probe rest
Optional accessories	Video printer, Video printer paper, Pachymetry probe (45° fixed type)*2, Pachymetry probe (straight type), Test piece for 45° pachymetry probes*2, Test piece for straight pachymetry probe, Barcode reader, Magnetic card reader, RS-232C cable	Pachymetry probe (45° fixed type)*2, Pachymetry probe (straight type), Test piece for 45° pachymetry probes*2, Test piece for straight pachymetry probe, Probe stand, Barcode reader, Magnetic card reader, RS-232C cable

*1 The model without pachymetry is also available.

*2 Provided as standard accessories depending on the configuration.



US-4000

Product/model name: ECHOSCAN US-4000
ECHOSCAN US-500

Brochure and listed features of the device are intended for non-US practitioners.

Specifications may vary depending on circumstances in each country.

Specifications and design are subject to change without notice.

 Eye & Health Care
NIDEK CO., LTD.

HEAD OFFICE
(International Div.)
34-14 Maehama,
Hiroishi-cho, Gamagori,
Aichi 443-0038, JAPAN
TEL: +81-533-67-8895
URL: www.nidek.com

TOKYO OFFICE
(International Div.)
3F Sumitomo Fudosan Hongo
Bldg., 3-22-5 Hongo, Bunkyo-ku,
Tokyo 113-0033, JAPAN
TEL: +81-3-5844-2641
URL: www.nidek.com

NIDEK INC.
2040 Corporate Court,
San Jose, CA 95131, U.S.A.
TEL: +1-408-468-6400
+1-800-223-9044
(US Only)
URL: usa.nidek.com

NIDEK S.A.
Europarc,
13 rue Auguste Perret,
94042 Créteil, FRANCE
TEL: +33-1-49 80 97 97
URL: www.nidek.fr

NIDEK TECHNOLOGIES S.R.L.
Via dell'Artigianato,
6/A, 35020 Albignasego (Padova),
ITALY
TEL: +39 049 8629200/8626399
URL: www.nidektechnologies.it

NIDEK (SHANGHAI) CO., LTD.
Rm3205, Shanghai Multi
Media Park, No.1027 Chang
Ning Rd, Chang Ning District,
Shanghai, CHINA 200050
TEL: +86 021-5212-7942
URL: www.nidek-china.cn

NIDEK SINGAPORE PTE. LTD.
51 Changi Business Park
Central 2, #06-14,
The Signature 486066,
SINGAPORE
TEL: +65 6588 0389
URL: www.nidek.sg

[Manufacturer]