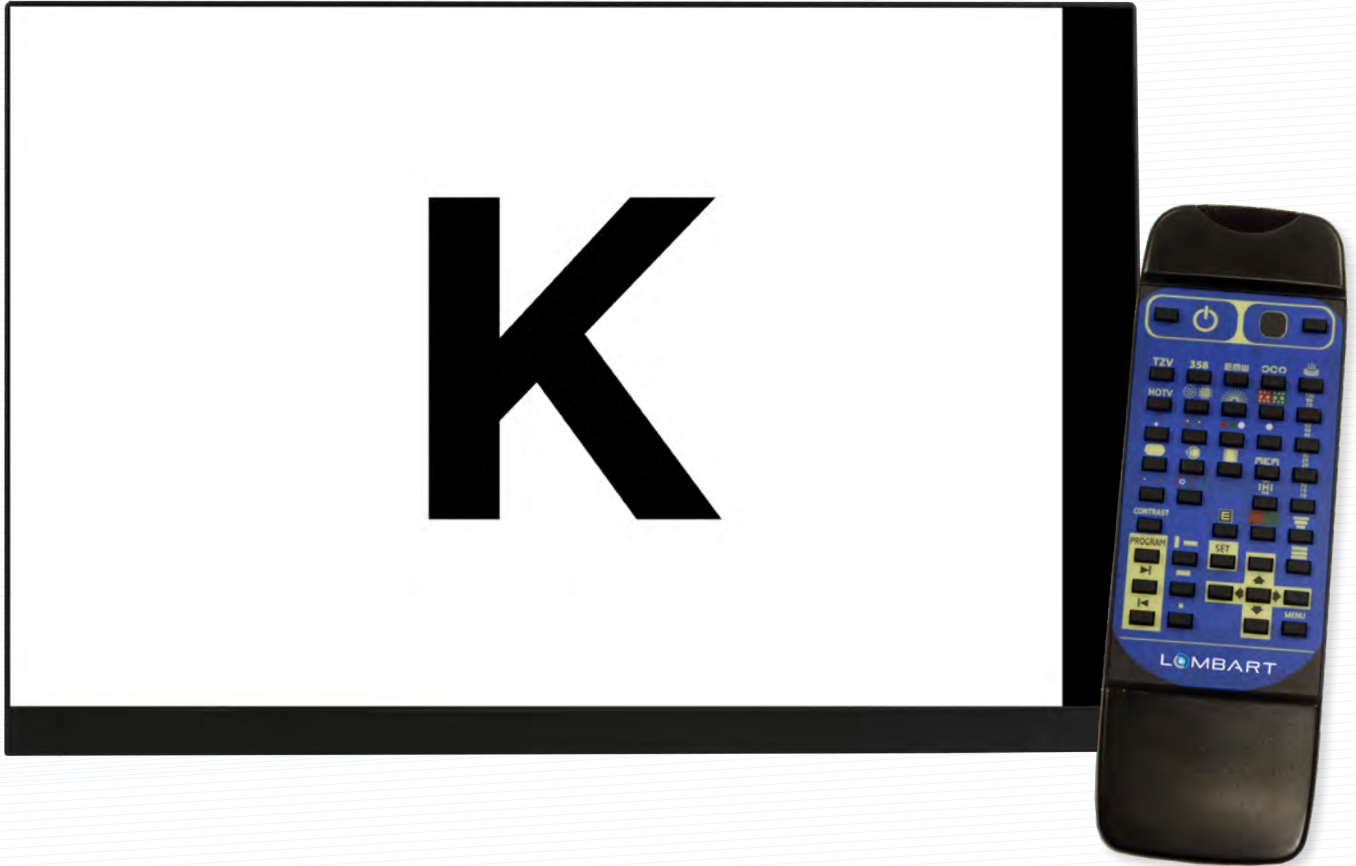


CVS-2 LCD VISUAL ACUITY SYSTEM

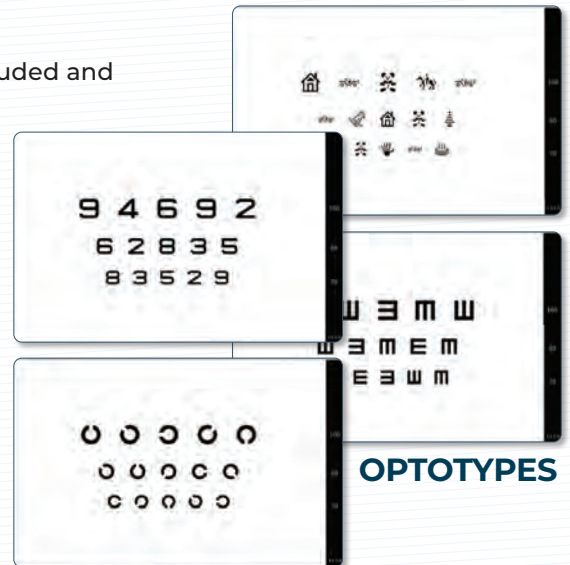


COMPREHENSIVE VISUAL ACUITY SOLUTION

- Multiple optotype selections with letters, E's, numbers Landolt rings, HOTV, Snellan, and children's VA charts
- All acuity slides presented with ETDRS spacing
- Contrast sensitivity testing
- Crowding bars for pediatric testing
- R/G binocular tests
- Multimedia system: animations, cartoons, and education slides included and more can be added
- Specialty slides including color tests

ADDED FEATURES:

- Intuitive remote controller
- Randomization of optotypes
- Custom sequences can be programmed
- Memory button: allows instant slide selection of your selected slide
- High resolution 24" LCD screen: provides optimal brightness for clear presentation of slides



BINOCULAR TESTS



REVERSED

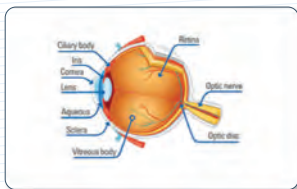
DUOCHROME



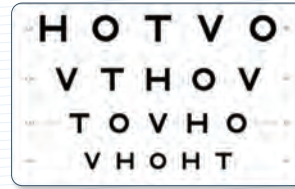
CROWDING BARS



MULTIMEDIA



EXTENDED ETDRS CHARTS



ASTIGMATISM CHARTS



CONTRAST SENSITIVITY



24 COLOR TESTS



LOMBART CVS-2 ACUITY SYSTEM SPECIFICATIONS

DISPLAY	24IN. WUXGA TFT LCD (1920 X 1200PX)
BRIGHTNESS	MAXIMUM 300CD/M2
DIMENSION & WEIGHT	(W)568 X (H)372 X (D)54MM, APPROXIMATELY 4.0KG
POWER SUPPLY	DC 12V 5A
MEASURING DISTANCE	9FT. TO 26FT. (2.7 TO 8 METERS)
EXTERNAL INTERFACE	4X USB, RS-232, 1X ETHERNET (10/100) , 1X SERIAL

CONTACT LOMBART AT **800-LOMBART OR LOMBARTHEALTHCARE.COM**