



EYEFFICIENTSM



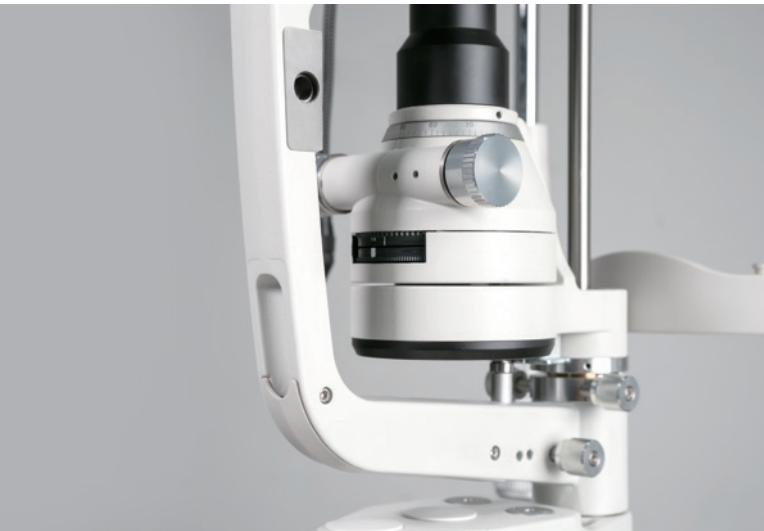
Slit Lamp Microscope
S260/S260S





HD Optical System

Optical resolution is up to 200 lp/mm(2700·N lp/mm), providing more details of the pathologies.



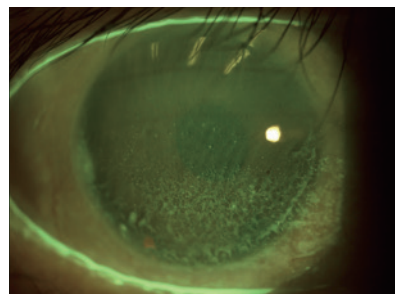
LED Illumination

The light of MediWorks LED lamp is very similar to halogen lamp, which conforms to the operating habit of doctors. The LED lamp MediWorks applied has a low color temperature and high illumination intensity, making view of retina without glare-colors much more vivid and view of cornea with nerves pop out better. The LED lamp has a longer life span and consumes less energy.



Built-in Yellow Filter

Increase positive rate of early corneal epithelial staining
Built-in yellow filter along with cobalt-blue filter increases the contrast of Sodium Fluorescein Staining image.



Easier Installation

Compact control panel with built-in power supply makes it much easier to install the slit lamp especially when installing the slit lamp on an ophthalmic unit. Users do not need to find place to install the chunky power box.

Optional Accessories



Metal Plate (work with refraction units)

When placing a slit lamp on a refraction unit, it is suggested to use MediWorks metal plate for easier installation. With smart size design, it is easy to move the whole suite of slit lamp from one refraction unit to another without drilling any screw holes on the table tops.



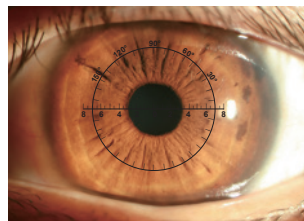
Instrument Stand Pin (work with US style instrument stand)

This instrument stand pin is specially designed to install MediWorks slit lamps onto US style instrument stands. The diameter of the joint pin is 19mm, compatible with most of the instrument stands. With this pin the slit lamp table top can be installed to the lower slit lamp arm of instrument stand.



Measuring Eyepiece

Equipped with a reticle inside, the eyepiece has a measuring function which can facilitate doctors to measure the pathologies conveniently and give more accurate diagnosis.



Observation Tube

Connected through beam splitter, the observation tube enable another medical staff to observe the patient's eye condition from the slit lamp. It is good for teaching education purpose.

Specifications

Microscope	S260	S260S
Microscope Type	Galilean Type	
Magnification Change	Revolving drum 5 steps	Revolving drum 3 steps
Total Magnification	6.3X, 10X, 16X, 25X, 40X	10X, 16X, 25X
Optical Resolution	2700·N lp/mm (200 lp/mm)	
Eyepieces	12.5X	
Angle between Eyepieces	10°	
Pupillary Adjustment	52mm-80mm	
Diopter Adjustment	-8D - +8D	
Field of View	Ø36.2mm、Ø22.3mm、Ø14mm、Ø8.9mm、Ø5.7mm	Ø22.3mm、Ø14mm、Ø8.9mm

Slit Illumination	
Slit Width	0~14mm continuous (slit becomes a circle at 14mm)
Slit Length	1~14mm continuous
Aperture Diameters	Ø14mm, Ø8mm, Ø3.5mm, Ø0.2mm
Slit Angle	0°~180°
Filters	Heat-absorbing filter, Red-free filter, Cobalt blue filter, Built-in yellow filter
Lamp	LED
Luminance	≥150klx

Power Supply	
Input Voltage	~100V~240V
Input Frequency	50Hz/60Hz
Rated Current	1.2A
Output Voltage	LED 3V, Fixation 15V

Packaging	
Dimension	740mm x 450mm x 530mm(L/W/H)
Gross weight	22kg
Net weight	16kg



EYEFFICIENT

eyefficient.com | 800.417.8136

9241 Ravenna Rd, Unit C6, Twinsburg, OH 44087

