

VisionBlue® (0.06% Trypan Blue)



- Trusted for over 6 million cataract surgeries since launch.
- The only trypan blue stain for anterior use approved by the FDA.



Dr Mitchell Weikert, Associate Professor, Baylor College of Medicine, USA

“Over the last 12 years, I’ve never regretted using VisionBlue®, but I’ve certainly had cases where I’ve regretted NOT using it. It continues to be an essential component in my surgical toolbox.”

See the difference

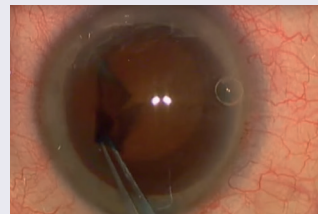
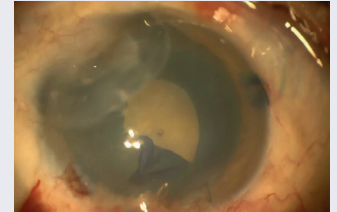
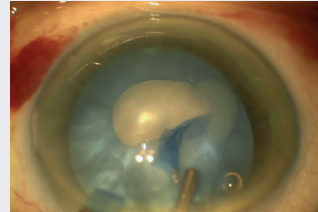
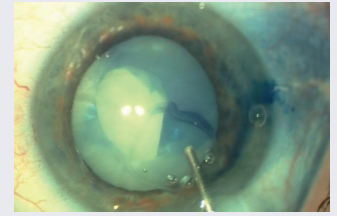
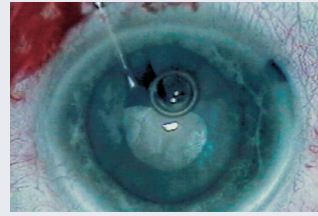
- **Assuring the complete**, circular capsulorhexis required for a safe phaco-emulsification procedure ¹³⁻¹⁶
- **High success** rates in performing anterior capsulotomy in cases of mature or brunescant cataracts ^{5, 6, 7, 11, 12}
- **Enhanced contrast** between the capsulorhexis rim, instrumentation and the adjacent nucleus ¹²⁻¹⁶
- **Reduced risk** of radial capsule tears and helps ensure a stable intraocular lens platform ^{1, 2, 3, 8}
- **Effective and safe** recovery of 'lost' capsulorhexis edge ⁴
- **Improved efficacy** in performing capsulorhexis in cases of narrow pupil and pediatric cataracts ^{9, 10}
- **Improves visualization** in cases of vitreous hemorrhage and hazy or scarred cornea ^{4, 5}



Ravi D Goel, MD , Regional Eye Associates / Wills Eye, USA

"I utilize the safest and most cutting edge cataract surgery technologies. Even with the latest microscope technology,

VisionBlue® is a critical aid in the ophthalmologist's armamentarium. VisionBlue® can turn the advanced white mature cataract into a routine case. I will not enter an operating room unless available on stand-by."



VisionBlue® usage description

VisionBlue® is indicated for use as an aid in ophthalmic surgery by staining the anterior capsule of the lens. Inadequate visualization of the anterior lens capsule may result in an incomplete capsulorhexis, which carries a high risk of radial capsule tears and associated complications. VisionBlue® capsule staining therefore facilitates the performance of a capsulorhexis in the absence of a red fundus reflex, and reduces the risk of capsulorhexis-related complications by better visualization of radial capsule tears. VisionBlue® can be injected directly onto the anterior lens capsule and stains the capsule instantly. The capsule staining procedure is therefore quick and easy to perform.



HPLC Testing (High Performance Liquid Chromatography)	Trypan Blue Purity Content (%)	Monoazo Dye Impurity Content (%)
VisionBlue® (D.O.R.C.)	≥96%	0.8
Competitor 1**	94.8	3.2
Competitor 2**	92.9	3.9
Competitor 3**	92.5	3.3
Competitor 4**	91.4	5.4
Competitor 5**	90.0	3.0
Competitor 6**	89.6	2.8
Competitor 7**	76.8	1.7

Purity analysis (test protocol available upon request)

* Typical VisionBlue® purity value – available in batch level Certificate of Analysis

** Competitor not approved by FDA; individual competitor samples were obtained and analysed.



0,8%

1,7%

Monoazo dye impurity content: visual comparison

Important Safety Information

Following the procedure, excess dye should be removed by thorough irrigation of the anterior chamber. Adverse reactions reported following use of trypan blue include discoloration of high water content hydrogen intraocular lenses and inadvertent staining of the posterior lens capsule and vitreous face. Staining of the posterior lens capsule or staining of the vitreous face is generally self limited, lasting up to one week.

Know what you are putting in the eye

- VisionBlue® is the **only trypan blue stain** for anterior use approved by the FDA
- **No confirmed adverse** events reported since launch in 2004
- **Highly purified trypan blue** with lowest recorded levels of mono-azo dye – known for carcinogenic properties in medical use*
- **High purification** avoids the reported TASS risk from lower purity generic trypan blue use
- **Batch level HPLC testing and Certificate of Analysis** provides purity assurance and traceability for every lot produced

* Unidentified impurities within trypan blue have been linked to cases of toxicity in cataract surgery^{17,18}



Elena Barraquer MD

“My preferred staining approach in cataract surgery is to use VisionBlue®. Some ophthalmic trypan blue solutions include clumps, and, in my experience, these may not stain the anterior capsule optimally and can compromise the entire procedure.

I look for maximum purity in an ophthalmic staining liquid so that I can be confident that the injected vital dye will not damage the corneal endothelium. The purity of any substance injected into the anterior chamber must be extremely high.”

VisionBlue® product information

Ref. VBL.10S.USA
BOX / 10 - STERILE
0.5ML SYRINGE – READY TO USE

Patent:

U.S. 6,720,314 & 6,367,480

Video



D.O.R.C. (Dutch Ophthalmic, USA)
International B.V.
10 Continental Drive, Bldg 1, Exeter, NH 03833, USA

VisionBlue®: Helping to save vision globally

"Without VisionBlue®, to perform phacoemulsification on "African cataracts" would be much more difficult and risky. Thank you D.O.R.C. for facilitating my work!"

Elena Barraquer, President of the FUNDACIÓN ELENA BARRAQUER, a non-profit organization that fights against blindness caused by cataracts in developing countries (www.fundacionelenabarraquer.com)



References

- (1) Neuhann, T. (1987). Theory and surgical technic of capsulorhexis. *Klin Monbl Augenheilkd.* Jun;190(6):542-5.
- (2) Gimbel, HV, Neuhann, T. (1990). Development, advantages, and methods of the continuous circular capsulorhexis technique. *Cataract Refract Surg.* Jan;16(1):31-7.
- (3) Assia, EI, Apple, DJ, Barden, A., Tsai JC, Castaneda, VE, Hoggatt JS. (1991). An experimental study comparing various anterior capsulectomy techniques. *Arch Ophthalmol.* May;109(5):642-7.
- (4) De Waard, PW, Budo, CJ, Melles, GR. (2002). Trypan blue capsular staining to "find" the leading edge of a "lost" capsulorhexis. *Am J Ophthalmol.* Aug;134(2):271-2.
- (5) Kothari, K., Jain, SS, Shah, NJ. (2001). Anterior capsular staining with trypan blue for capsulorhexis in mature and hypermature cataracts. A preliminary study. *Indian J Ophthalmol.* Sep; 49(3):177-80
- (6) Jacob, S., Agarwal, A., Agarwal, A., Agarwal, S., Chowdhary, S., Chowdhary, R., Bagmar AA. (2002). Trypan blue as an adjunct for safe phacoemulsification in eyes with white cataract. *J Cataract Refract Surg.* Oct; 28(10):1819-25.
- (7) Pandey, SK, Werner, L., Escobar-Gomez, M., Roig-Melo EA, Apple DJ. (2000). Dye-enhanced cataract surgery. Part 1: anterior capsule staining for capsulorhexis in advanced/white cataract. *J Cataract Refract Surg.* Jul;26(7):1052-9.
- (8) Naidu, TS. (2015). Capsular Staining is Helpful in Routine and Complex Cases. Safety is paramount. *CRSTEurope* October.
- (9) FFridman, G., Rizzuti, AE, Liao, J., Rolain, M., Deutsch, JA, Kaufman SC. (2016). Trypan blue as a surgical adjunct in pediatric cataract surgery. *J Cataract Refract Surg.* Dec;42(12):1774-1778.
- (10) Lotfy, A., Abdelrahman, A. (2017). Trypan blue-assisted posterior capsulorhexis in pediatric cataract surgery. *Clin Ophthalmol.* Jan 24;11:219-222
- (11) Saini, JS, Jain, AK, Sukhija, J., Gupta, P., Saroha, V. (2003). Anterior and posterior capsulorhexis in pediatric cataract surgery with or without trypan blue dye: Randomized prospective clinical study. *J Cataract Refract Surg.* 29(9):1733–1737
- (12) Werner, L., Pandey, SK, Escobar-Gomez, M., Hoddinott, DS, Apple DJ. (2000). Dye-enhanced cataract surgery. Part 2: learning critical steps of phacoemulsification. *J Cataract Refract Surg.* Jul;26(7):1060-5
- (13) Melles, GJR, De Waard, PWT, Pameyer, JH, Houdijn Beekhuis, W. (1999). Trypan blue capsule staining to visualize the capsulorhexis in cataract surgery. *J Cataract Refractive Surgery.* 25:7-9
- (14) Sturmer, J. (2002). Cataract surgery and the "Blue Miracle", *Klin. Monatsblatt Augenheilkunde.* 219:191
- (15) Bhartiya, P., Sharma, N., Ray, M., Sinha, R., Vaypayee, RB. (2002). Trypan blue assisted phacoemulsification in corneal opacities, *British J. Ophthalmology.* 86:857-859
- (16) Dada, T., Ray, M., Bhartiya, P., Vaypayee, RB. (2002). Trypan blue assisted capsulorhexis for trainee phacoemulsification surgeons, *J. Cataract Refractive Surgery.* 28:575-576
- (17) Buzard, K., Zhang, J., Thumann, G., Striepecke, R., Sunalp, M. (2010). Two cases of toxic anterior segment syndrome from generic trypan blue. *J. Cataract Refractive Surgery.* 36:2195-2199
- (18) Matsou, A., Tzamalís, A., Chalvatzis, N., Mataftsi, A., Tsinopoulos, I., Brazitikos, P. (2017). Generic trypan blue as possible cause of a cluster of toxic anterior segment syndrome cases after uneventful cataract surgery. *J.Cataract Refractive Surgery.* 43:848–852