

# TissueBlue™

(Brilliant Blue G Ophthalmic Solution) 0.025%



- The ONLY FDA-approved selective stain for the ILM.
- Easy open-and-inject application from a pre-filled, sterile syringe.

**Confidence. Consistency. Convenience.**



**John Pollack, MD, USA:** "FDA approval of TissueBlue™ is great for U.S. retina specialists who have long-awaited an FDA-approved ILM dye that combines a very strong safety profile and excellent staining characteristics. This is a very welcome development."

## The first and ONLY FDA-approved selective stain for the ILM

- **Confidence of superior purity**<sup>(1)</sup> – FDA-approved, pharmaceutical-grade dye.
- **Consistency & Convenience** – Pre-filled, sterile syringe eliminates need to mix or source via compounding pharmacies.
- **Proven safety\*** – Trusted for ILM staining in over 350,000<sup>(2)</sup> procedures worldwide.

## Patented formula for optimal staining performance

- Advanced injection characteristics due to 4% PEG “carrier” - sinks immediately to posterior pole as a cohesive ball.
- Stains only target tissue and no diffusion throughout the eye.
- Highly purified Brilliant Blue G dye - minimum 97% purity.

## Easy open-and-inject application

- Easy to use pre-filled 0.5ml syringe.
- Supplied in box of 5 sterile, single use syringes.

\* Marketed as ILM Blue® Outside US since 2010.

### References

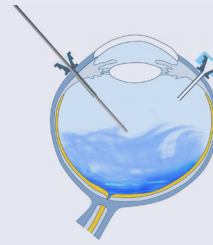
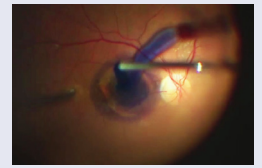
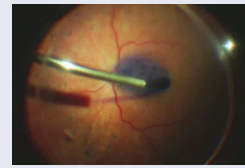
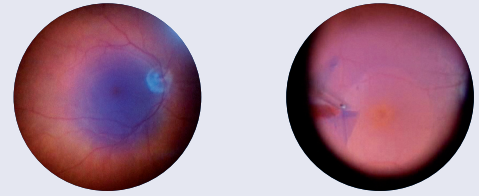
<sup>(1)</sup> Data on file – Results of HPLC purity tests performed on samples of compounded BBG dyes available in the U.S.

<sup>(2)</sup> Total DORC Global Sales data for ILM Blue® since launch – available on file.

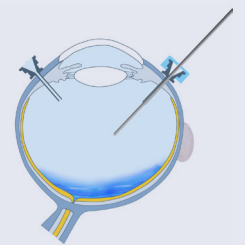
# TissueBlue™

(Brilliant Blue G Ophthalmic Solution) 0.025%

EFFECTIVE ILM STAINING DUE TO HIGH PURIFICATION - MINIMUM 97% PURITY



Dye without PEG



TissueBlue™ with 4% PEG



Pre-filled, 0.5ml sterile syringe

## IMPORTANT SAFETY INFORMATION

Indication: TISSUEBLUE™ (Brilliant Blue G Ophthalmic Solution) 0.025% is a disclosing agent indicated to selectively stain the internal limiting membrane (ILM). Adverse Events: Adverse reactions that have been reported in procedures that included the use of TISSUEBLUE™ have often been associated with the surgical procedure. The complications include retinal (retinal break, tear, hemorrhage, and detachment) and cataracts. Warnings/Precautions: Excessive staining: Excess TISSUEBLUE™ should be removed from the eye immediately after staining. When using the

syringe, surgeons or staff should make sure the plunger moves smoothly before injecting the solution. You are encouraged to report negative side effects of prescription drugs to the FDA. Visit [www.fda.gov/medwatch](http://www.fda.gov/medwatch) or call 1-800-FDA-1088.

Dutch Ophthalmic, USA  
10 Continental Drive, Bldg 1  
Exeter, NH 03833, USA  
Phone: 800-75-DUTCH or 603-778-6929

For more information on TissueBlue™ go to [www.tissueblue.com](http://www.tissueblue.com)